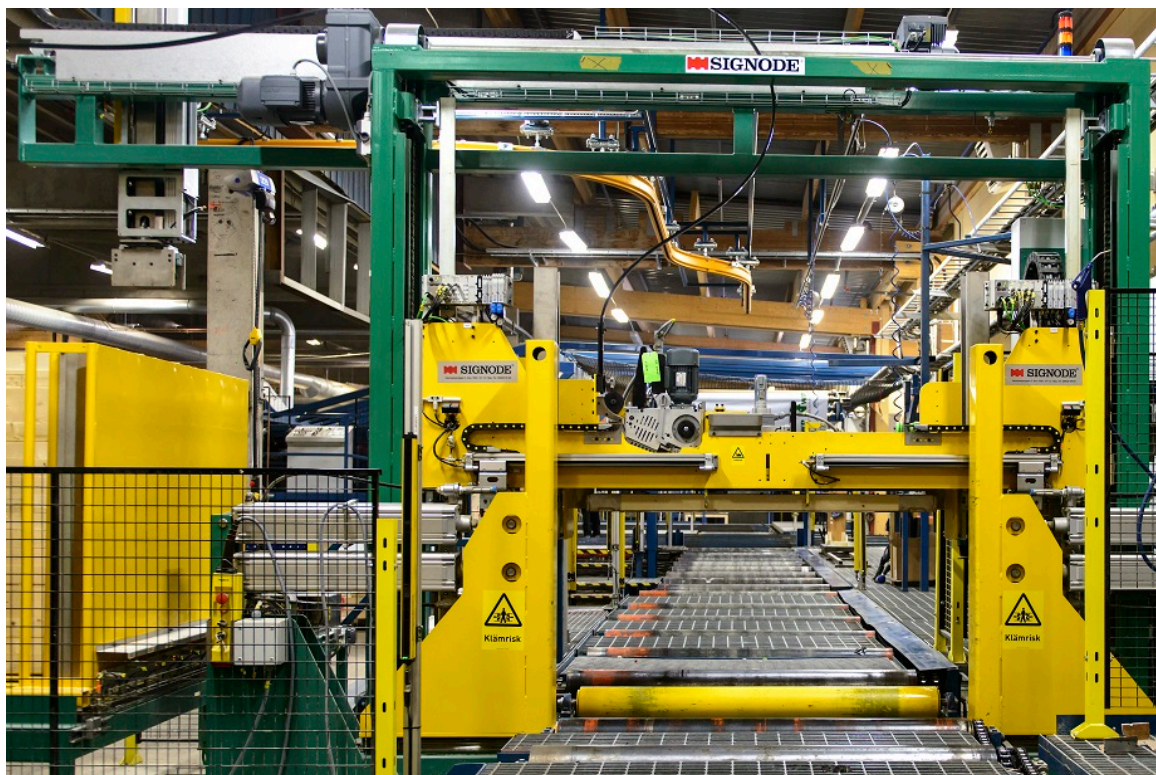
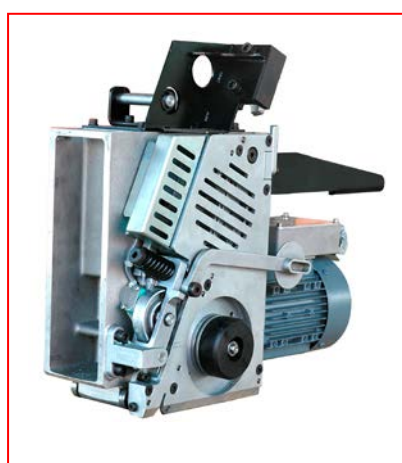


SP-Z20

Soft Press for planed timber



Z-20 Sealing Strapping Head



Z-20 Tensioning Strapping Head

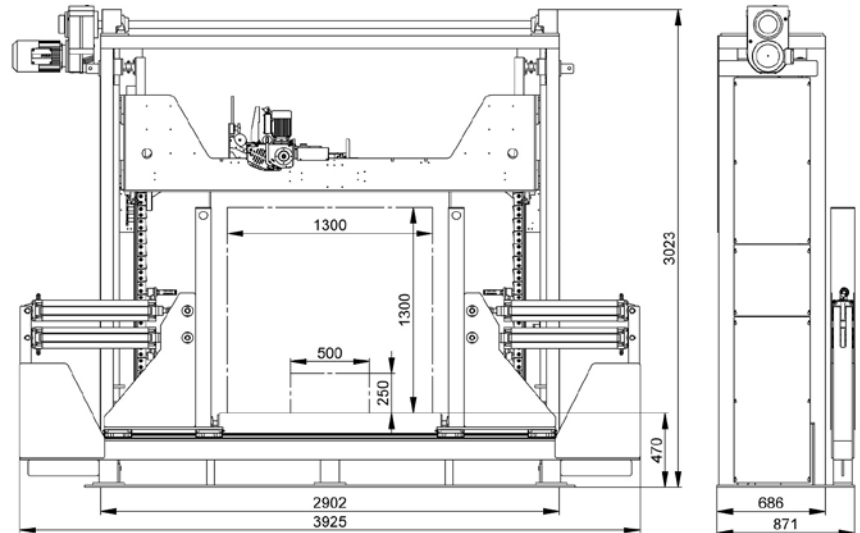
SP-Z20

Soft Press for planed timber

Design Criteria

Signode SP-Z20, soft press, has been designed to take into account the specific need of the industry for the compression and strapping of planed timber packages:

- Reduction in edge damages
- Higher production throughputs
- Maximum machine up-time
- Increased flexibility
- Improved package stability
- Operator friendly controls
- Easy Service & Maintenance



The machine is equipped with electrical strapping head, Z-20 for polyester strapping. Z-20 head is an innovative modular strapping system consisting of separate sealing and tensioning modules. The strapping head is top mounted on the upper compression bar and is free floating for strap tension transmission. The machine can compress and strap packages with a min. height of only 250 mm. The machine can be equipped with many options to suit the exact needs of the customers plants and products to be packaged.

Options

- Automatic top/bottom edge protection
- Automatic bottom batten feeder
- Automatic top batten feeder
- Side press (pneumatic)

Technical Specifications

Pack Width min. 500 – max. 1300mm
If the package width is smaller than 800mm it must be transported in the centre of the conveyor.
Pack Height min. 250 – max. 1300mm
Control system Siemens PLC S7-1200
Electrical Connection 400 Volt, 3-Ph, 50 Hz